



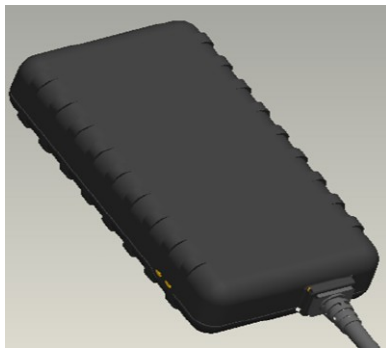
## ALK-120-C INSTALLATION GUIDE

- When mounting the ALK120C GPS device, find a suitable covert mounting location that is not obstructed by metal ensuring the device printed label is facing down.
- Power for the ALK120C should always be taken directly from the vehicle battery when possible or from a wire that reads the exact same voltage as read at the battery terminals.

**NOTE: A main supply voltage for the device that reads slightly less than the battery voltage reads at the terminals indicates that the supply wire is not directly taken from the battery and should NOT be used.**

### INSTALLATION STEPS

- Connect the **(RED)** power wire from the device to a constant 12-VDC power source.
- Connect the **(BLACK)** ground wire from the device to chassis ground, or directly to the battery ground terminal.
- To receive reports based on ignition state, connect the **(WHITE)** wire from the device to any switched power source. (A wire that goes hot when ignition key switched to the **(ON)** position).



### DEVICE WIRE COLOR

POWER	RED
GROUND	BLACK

### UNDERSTANDING THE LED LIGHTS

Successful device operation can be verified by observing the LED indicators on the device, a correctly installed device will have both LED's solid on.

#### GREEN LED:

Blinking = Searching GPS - Solid = GPS LOCK

#### AMBER LED:

Solid = Cellular Locked - Fast Blinking = Searching

**NOTE:** If the **AMBER LED** does not turn solid after 2 or 3 minutes, cycle power to the device and try again.